



## 产品集景 THE PRODUCT GATHERS THE VIEW



FIG:A

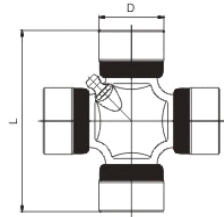


FIG:B

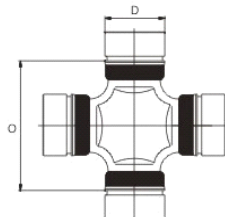


FIG:C

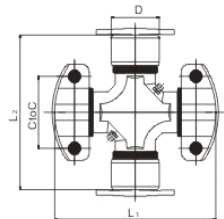


FIG:D

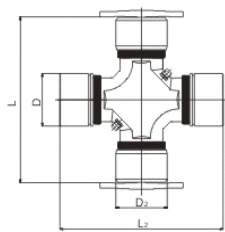


FIG:E

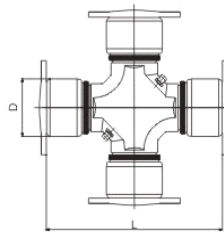


FIG:F

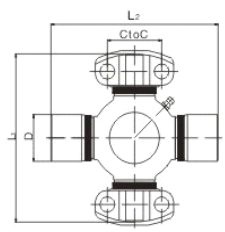


FIG:G

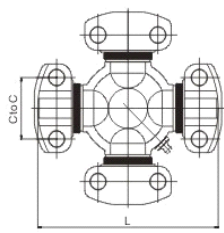


FIG:H

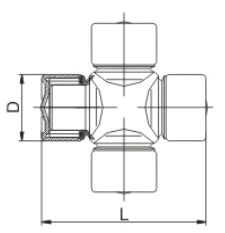


FIG:I

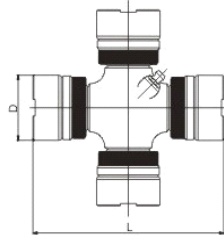
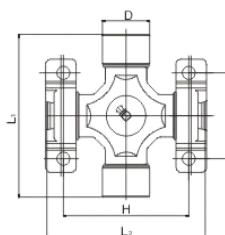


FIG:J





杭州新世纪万向节有限公司

HANGZHOU NEW CENTURY UNIVERSAL JOINT CO.,LTD

**U-JOINT FOR BRASIL VEHICLES**

**FIGURA - A**

PART NO.	"D"	Ø " L "	PART NO.	"D"	Ø " L "
	(MM)			(MM)	
CZ-101	61.2	23.8	CZ-220	126.0	44.0
CZ-102	70.0	27.0	CZ-221	141.9	41.2
CZ-105	128.3	41.3	CZ-228	120.3	45.0
CZ-116	82.5	30.0	CZ-229	125.6	48.0
CZ-117	70.1	27.0	CZ-230	132.9	52.1
CZ-120	61.9	27.0	CZ-231	152.1	57.0
CZ-121	81.7	27.0	CZ-232	163.0	60.0
CZ-122	61.2	23.8	CZ-251	149.0	44.0
CZ-127	74.6	27.0	CZ-252	92.0	27.0
CZ-134	75.6	27.0	CZ-254	106.1	34.9
CZ-135	71.3	27.0	CZ-255	164.0	50.0
CZ-137	83.1	<b>30.0</b>	CZ-256	126.1	34.9
CZ-138	62.0	23.8	CZ-259	48.2	19.0
CZ-140	75.7	32.0	CZ-265	160.9	48.0
CZ-148	82.5	30.0	CZ-268	77.8	24.0
CZ-149	70.1	27.0	CZ-271	126.1	41.2
CZ-170	80.0	27.0	CZ-277	163.9	57.0
CZ-181	62.0	23.8	CZ-279	125.6	48.0
CZ-182	93.0	34.9	CZ-280	189.7	65.0
CZ-183	71.0	27.0	CZ-286	135.0	53.0
CZ-184	96.7	35.0	CZ-287	147.8	38.0
CZ-185	97.5	35.0	CZ-289	171.8	65.0
CZ-186	81.6	30.2	CZ-290	138.8	49.2
CZ-187	70.4	27.0	CZ-302	56.0	18.0
CZ-188	97.0	34.0			
CZ-189	70.9	27.0			
CZ-201	74.6	27.0			
CZ-204	48.2	19.0			
CZ-205	45.4	17.0			
CZ-208	92.0	30.1			

**FIGURA - B**

PART NO.	"D"	Ø " O "
	(MM)	(MM)
CZ-104	24.6	38.8
CZ-106	24.6	38.8
CZ-136	27.4	50.2
CZ-171	26.5	47.2
CZ-172	32.0	56.9
CZ-180	30.1	52.8
CZ-226	27.0	52.6
CZ-227	38.0	57.2
CZ-276	68.0	89.0
CZ-288	42.0	66.3

**FIGURA - F**

PART NO.	"L2"	Ø "D"	"C"	"L1"	"E"	Ø "F"
	(MM)	(MM)	(MM)	(MM)	(MM)	
CZ-108	126.1	34.9	42.8	140.5	114.8	-
CZ-112	106.2	30.1	36.5	107.9	87.2	-
CZ-114	126.1	34.9	42.8	140.5	114.8	UNF 3/8"

CZ-128	141.9	41.2	49.1	148.3	117.4	_
CZ-176	106.1	34.9	42.8	115.0	89.0	_
CZ-177	106.1	34.9	42.8	115.0	89.0	UNF 3/8"
CZ-250	141.9	41.2	49.1	148.3	117.4	_
CZ-266	106.2	30.1	42.5	115.0	89.0	_
CZ-107	59.4	25.4	33.3	79.2	59.5	UNF 5/16"

**FIGURA--G**

PART NO.	"C"	Ø " L "	"E"	Ø "F"	
	(MM)	(MM)	(MM)		
CZ-109	42.5	140.5	114.8	_	10.4
CZ-110	36.5	107.9	86.9	_	9.0
CZ-111	49.1	148.3	117.4	UNF 7/16"	_
CZ-113	49.1	148.3	117.4	_	13.5
CZ-115	42.5	115.0	89.0	_	10.4
CZ-123	42.5	115.0	89.0	_	10.4
CZ-125	33.3	79.2	59.5	UNF 5/16"	8.5
CZ-126	42.5	140.5	114.8	_	_
CZ-131	36.5	107.9	87.2	_	9.2
CZ-132	36.5	107.9	87.2	UNF 5/16"	9.2
CZ-142	71.5	209.5	167.5	_	14.0
CZ-143	71.5	165.1	123.8	_	14.0
CZ-144	71.5	165.1	123.8	UNF 1/2"	_
CZ-145	49.1	148.3	117.4	UNF 7/16"	_
CZ-173	36.5	90.5	69.6	_	9.0
CZ-174	42.5	115.0	89.0	UNF 3/8"	_
CZ-175	36.5	107.9	87.2	UNF 5/16"	_
CZ-178	42.5	140.5	114.6	UNF 3/8"	10.5
CZ-179	33.3	79.5	59.5	_	8.5

**FIGURA-D**

PART NO.	"L2"	Ø " D "	"C"	"L1"	Ø " F "
	(MM)	(MM)	(MM)	(MM)	
CZ-264	134.8	47.6	59.0	134.8	UNF 5/16"
CZ-272	194.1	49.2	61.9	191.8	UNF 3/8"
CZ-274	157.0	49.2	61.9	154.7	UNF 3/8"

**FIGURA-E**

PART NO.	Ø " D "	"C"	"L"	Ø "F"	
CZ-124	47.6	59	134.8	UNF 5/16"	_
CZ-257	50	56	152.3	M8x1,25	_
CZ-270	49.2	61.9	191.8	UNF 3/8"	_
CZ-273	49.2	61.9	154.7	_	10.5